

November 2022 HBR Update



Post-OE Dependent Verification Reminder!

Congratulations on surviving 2023 Open Enrollment (OE)! Thank you all for your support prior to and during OE! With more than 320,000 members completing OE, we will call that a success!

Since OE has ended, please be mindful of reviewing all added dependents for the appropriate documentation. It is the HBR's responsibility to approve all dependent documents for new dependents. As in previous years, OE elections are automatically approved by Benefitfocus before all documentation is received. Please remember that enrollments approved before documentation is received still require documentation to be submitted and verified by the HBR.



As a part of the ongoing dependent audit, the State Health Plan will also review dependents added during Open Enrollment to ensure proper documentation has been provided. The Plan has seen great improvement in the accuracy and consistency of both task and dependent approvals over the past few years, and we look forward to seeing these results continue.

The Dependent Census Report (Data & Reporting, Standard Reports, Census tab) is the most efficient way to see what dependents are still

outstanding. Make sure to select “Open Enrollment” when running the report. Filter out those dependents who do not have coverage, then filter out those that have been verified. The remaining dependents will need to be addressed. Remember:

- **Verification must be completed by Friday, November 18, 2022.**
- **On Monday, November 21, 2022, the Plan will begin terminating coverage for unvalidated dependents.**

Below are a few reminders about acceptable documentation:

- Only 2021 1040s can be accepted unless the subscriber provides a previous year 1040 with a 2021 extension.
- Verification of Facts are only acceptable as documentation for newborns within six months of birth. After six months, a birth certificate or current 1040 showing the child as a dependent must be provided as verification for any dependent child.
- When birth certificates are provided as verification for a dependent child, we must receive the official birth certificate.
- Marriage certificates can be used to solely verify spouses within one year of the date on the marriage certificate.
- Employees must upload dependent verification documentation and provide a valid Social Security number for dependents 6 months or older when adding a dependent to the Plan.
- The full list of appropriate documentation and examples can be found on the State Health Plan’s [website](#).

Tobacco Cessation and Credit Removals

Please don’t forget to remind employees who, during Open Enrollment, selected that they were tobacco users but willing to visit a Primary Care Provider (PCP) for tobacco cessation counseling that they have until November 30, 2022, to complete at least one tobacco cessation counseling, or risk losing their premium credit.

The subscriber must present their State Health Plan ID card in order for the visit to be covered at 100 percent by the Plan.

New members enrolling in November or December for January 1, 2023, coverage will not be able to complete their tobacco cessation visit until January 1, 2023.

Just 2 HBR Monthly Webinars Left in 2022!

All monthly HBR webinars begin at 10 a.m. To register for the monthly webinars, see below or visit the Plan's [website](#).

As a reminder, you can find presentations for a webinar you missed by visiting the State Health Plan [HBR Monthly Training Archive](#) page. Be sure to check the HBR [Training and Development](#) page often to sign up for upcoming webinars and review the resources available to you, like [HBR University!](#)



Monthly HBR webinars continue through 2022. Don't miss any! To register for the monthly webinars, see below or visit the Plan's [website](#).

- [November 16, 2022, 10-11 a.m.](#)
- [December 14, 2022, 10-11 a.m.](#)

2023 New Hire Kits Coming Soon

The State Health Plan is preparing the 2023 new hire kit for employees joining your worksite. Be on the lookout for the kit, which contains everything employees need to know regarding their Plan options.

The kits include an introduction to the Plan, as well as important information about benefits, plan comparisons and how to enroll. Watch for it!



Next HBR Monthly Webinar
November 16, 2022 - 10am

[Click to Register! >](#)



This Month's
Healthy
Recipe

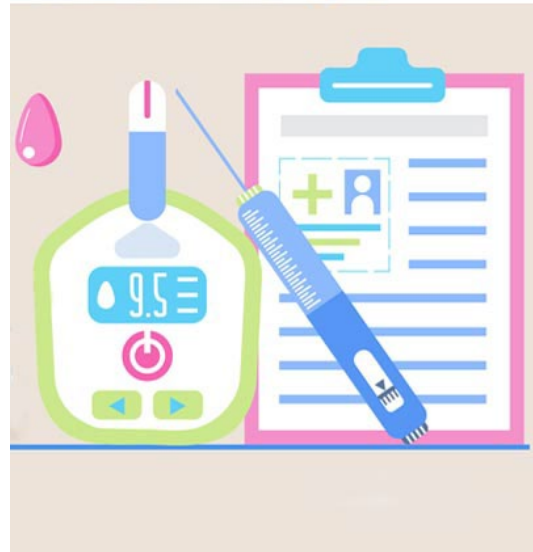


This Month's
Wellness
Tip



**Creamy Chipotle
Skillet Chicken Thighs**

[Get the Recipe! >](#)



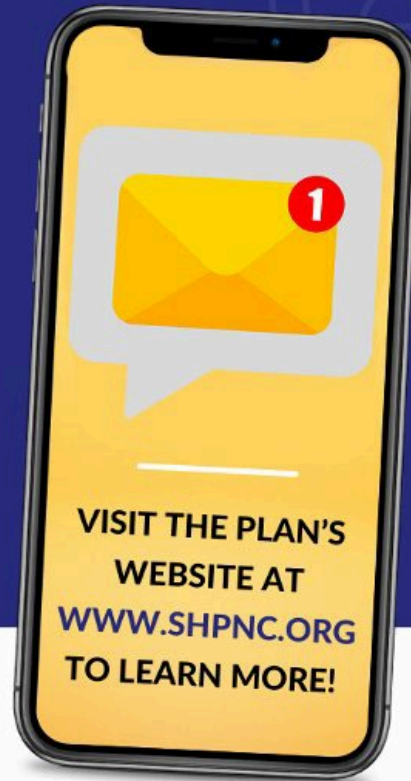
**Diabetes
Awareness Month**

[Learn More! >](#)

Connect with us on **facebook**

TEXT "JOIN" TO 76971

- Sign up to receive State Health Plan updates by text! Just text "Join" to 76971.
- Text messages will be general information regarding your State Health Plan benefits.



SIGN UP TODAY

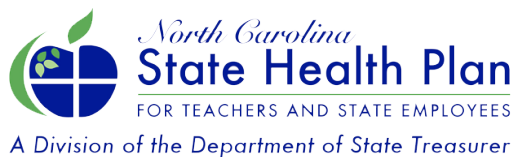


Message Frequency may vary. Message and Data rates may apply.
Reply STOP to cancel.

Eligibility and Enrollment Questions: 855-859-0966

Prescription Questions: 888-321-3124

For questions on this newsletter, e-mail: ppo.inquiries@nctreasurer.com



Dale R. Folwell, CPA
STATE TREASURER OF NORTH CAROLINA
DALE R. FOLWELL, CPA