

October 22, 2020 Member Alert – Actives



We're Nearly Halfway Through Open Enrollment!

If you have already taken action to complete your Open Enrollment elections, you may disregard this message.

All active and non-Medicare members will be moved to the 70/30 Plan for the 2021 benefit year.

You will need to take action by **October 31, 2020**, if you want to enroll in the 80/20 Plan or reduce your monthly premium. Please note that the 70/30 Plan remains premium-free for eligible non-Medicare retirees.

Important 2021 Highlights!

- No premium increases for the 3rd year in a row!
- Members who select a [Clear Pricing Project](#) Provider as their Primary Care Provider will enjoy a \$0 copay!
- Reduced copays for members who visit a Clear Pricing Project Specialist!
- Preferred and non-preferred insulin will have a \$0 copay for a 30-day supply!
- Preventive Services remain free – no copay or deductible – on the 80/20 and 70/30 plans!

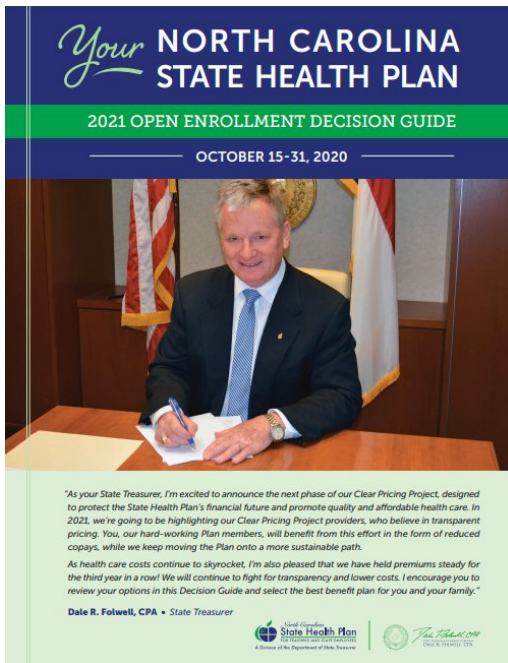
The Eligibility and Enrollment Support Center (855-859-0966) is offering extended hours during Open Enrollment (all times ET):

- Monday-Friday, 8 a.m.-10 p.m.
- Saturdays, 8 a.m.-5 p.m.

If you need assistance from the Eligibility and Enrollment Support Center you are encouraged to call on Saturdays or in the evenings when call hold times tend to be lower.

Decision Guides

Active Member Decision Guide



Non-Medicare Decision Guide

Videos

Open Enrollment Summary Video for Active Members



Open Enrollment Summary Video for Non-Medicare Members



Step-by-Step Enrollment Video



Your **NORTH CAROLINA
STATE HEALTH PLAN**

2021 OPEN ENROLLMENT DECISION GUIDE

OCTOBER 15-31, 2020



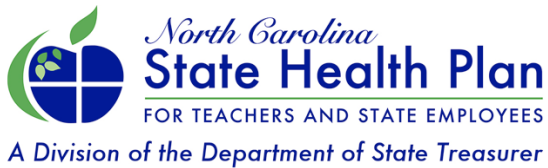
"As your State Treasurer, I'm excited to announce the next phase of our Clear Pricing Project, designed to protect the State Health Plan's financial future and promote quality and affordable health care. In 2021, we're going to be highlighting our Clear Pricing Project providers, who believe in transparent pricing. You, our hard-working Plan members, will benefit from this effort in the form of reduced copays, while we keep moving the Plan onto a more sustainable path.

As health care costs continue to skyrocket, I'm also pleased that we have held premiums steady for the third year in a row! We will continue to fight for transparency and lower costs. I encourage you to review your options in this Decision Guide and select the best benefit plan for you and your family."

Dale R. Folwell, CPA • State Treasurer



[Click here to complete your Open Enrollment →](#)



Dale R. Folwell, CPA
STATE TREASURER OF NORTH CAROLINA
DALE R. FOLWELL, CPA